

**FLOORPLAN OPTIONS**

We personalise our floorplans. Talk to us about our huge range of ready-to-go design options.

<b>Facades available:</b>	
Barrine, Mackay, Corella,	
<b>Overall home width</b>	<b>11.27m</b>
<b>Overall home length</b>	<b>10.43m</b>

Residence	141.7m <sup>2</sup>	15.3sq
Garage	23.7m <sup>2</sup>	2.6sq
Porch	2.6m <sup>2</sup>	0.3sq
<b>Total</b>	<b>168m<sup>2</sup></b>	<b>18.1sq</b>

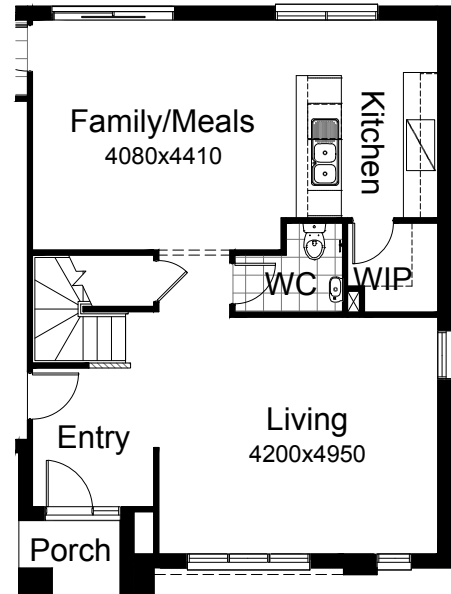
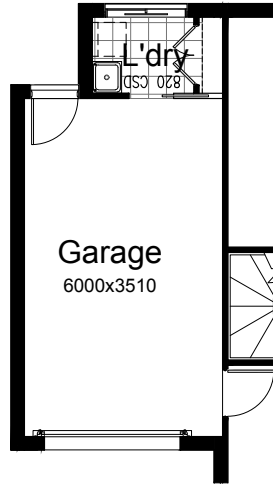
Listed details based on Barrine facade floorplan (illustrated)

\*Copyright conditions. All photos and illustrations are representative only. Floor plans and specifications may be varied by Burbank without notice, the dimensions are diagrammatic only and a Building Contract with final drawings will display correct dimensions and detail. All designs are the property of Burbank and must not be used, reproduced, copied or varied, wholly or in part without written permission from an authorised Burbank representative. Copyright Burbank Australia (NSW) Pty Ltd. ABN 88 610 822 770. NSW BL 295627C ACT BL 2016566.

**Call 13 BURBANK**  
**Visit [burbank.com.au](http://burbank.com.au)**

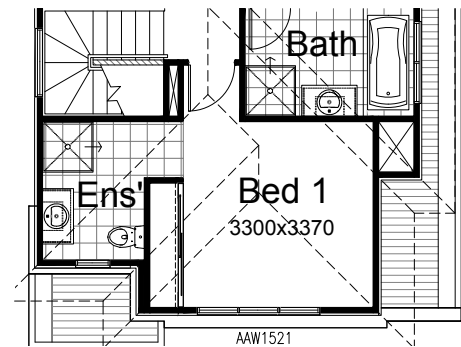
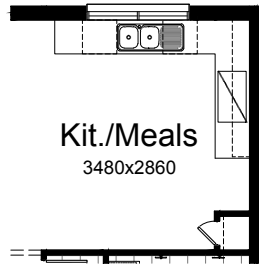
**OPTION LD1**

Provide Linen cupboard to Laundry with cavity sliding door from Garage in lieu of hinged door off Family



**OPTION K1**

Provide 632mm wide base cupboard with Microwave space and drawer under to Kitchen in lieu of 600mm base cupboard



**OPTION IP1**

Relocate Bed 1/Ensuite to first floor and Living to ground floor including WIP and galley Kitchen including 900mm retractable rangehood, 900mm cooktop, 900mm under bench oven, 450mm drawer unit, dishwasher provision, 1No. 900mm base cupboard, 2No. 800mm base cupboards, 1No. 450mm base cupboard, 2No. 800mm overhead cupboards, bench top and tiled splashback to suit.  
Provide 2018 sliding window to Kitchen i.l.o. 1218 sliding window. Provide 2009 awning window to Living i.l.o. 1006 sliding window to Ensuite.  
Provide additional sewer stack adjacent Entry for relocated Ensuite.